

S/Y FENIX



TECHNICAL INFORMATION

Cabins: 3

Toilets: 2

Max. Persons: 7 (6+1)

LOA: 11,99 m

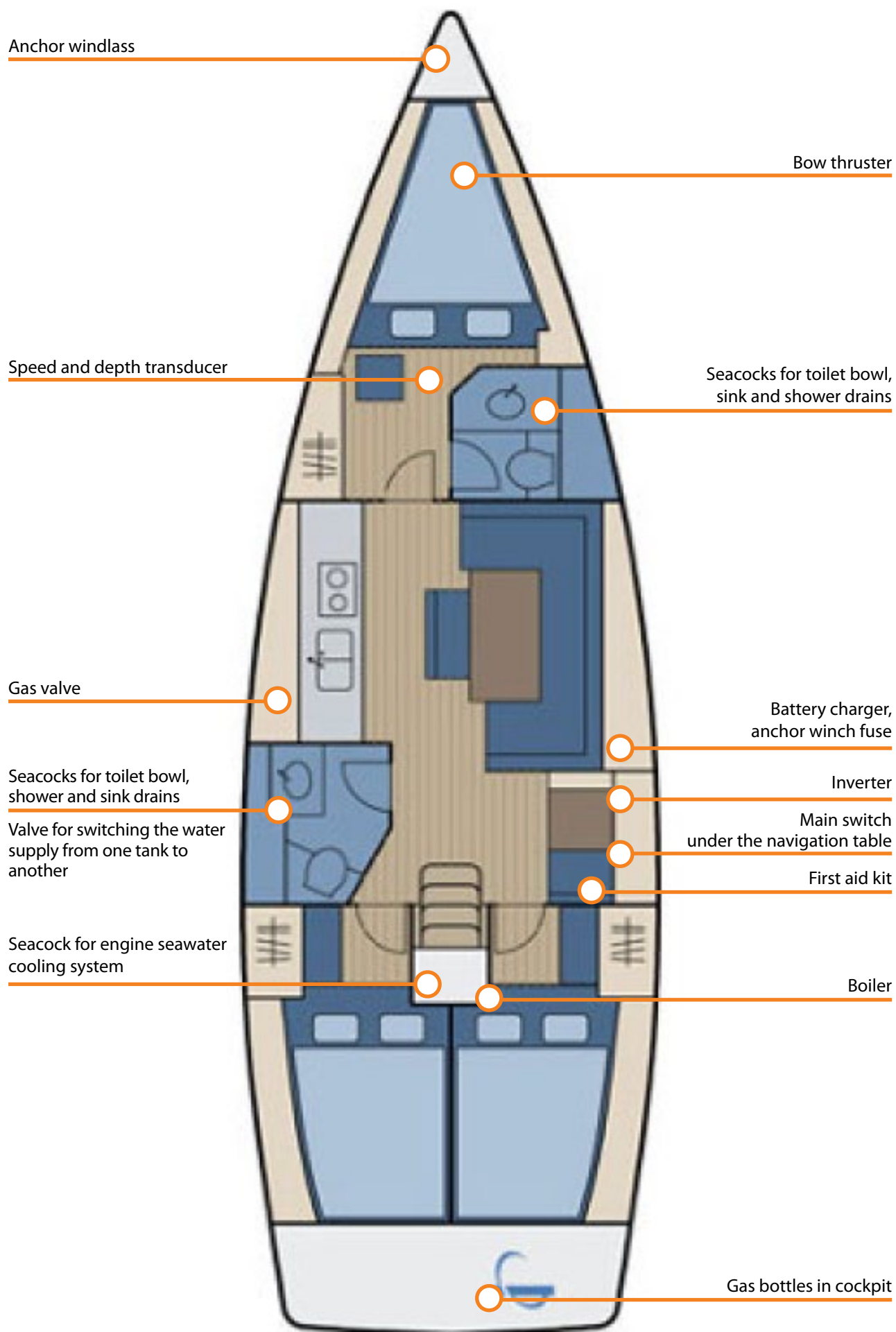
Beam: 3,99 m

Draft: 1,90 m

Engine: Volvo 38HP

Water tanks: 360 L

Fuel tank: 210 L



CONTENT

1 ELECTRIC PANEL

- 1.1 Control panel
- 1.2 Fuses and shore power indicator
- 1.3 Windlass fuse
- 1.4 Inverter / Main switch

2 VALVES

- 2.1 Emergency fuel cutoff valve
- 2.2 Gas valve in the galley
- 2.3 Gas valve in the cockpit

3 SANITATION

- 3.1 Toilet
- 3.2 Seacocks
- 3.3 Water supply switching lever

4 ENGINE AND ENGINE CONTROL PANEL

- 4.1 Engine compartment
- 4.2 Engine control panel: engine start / stop, gear lever, fuel level indicator, hour meter
- 4.3 Bow thruster

5 NAVIGATION INSTRUMENTS

- 5.1 Exterior instruments
- 5.2 Chartplotter

6 ANCHOR

- 6.1 Anchor and chain compartment
- 6.2 Electric windlass

7 DECK AND DINGHY

- 7.1 Cockpit shower
- 7.2 Dinghy
- 7.3 Outboard engine

8 BILGE

- 8.1 Bilge pump

9 SAFETY EQUIPMENT

- 9.1 Lifejackets and liferaft

10 TIPS

1 ELECTRIC PANEL



1.1 Control panel

Particular functions are marked next to every switch on the panel and explained by our skippers during the check-in.



1.2 Fuses and shore power indicator

LED's near every switch indicate whether the particular device is on or not

- Make sure to check the shore power connection by checking the 220V indicator (green light on the right panel). Please connect the shore power cable whenever you have the occasion.



1.3 Windlass fuse

The fuse is located behind the seat in the lounge



1.4 Inverter / main switch

The main power switches for service batteries and engine battery ① are located under the navigation table. By turning them counter-clockwise, all the electricity on board shuts down. This possibility is primarily used in an emergency situation, for example in case of a fire.



Inverter switch ② is located on the control panel. Please make sure that all devices connected to the inverter should be used only as long as necessary, for example until the mobile phone battery is charged, after which it should immediately be disconnected. Keep in mind that the inverter consumes the electricity even if there is no device connected to it, so in order to preserve energy, please switch it off after every use.

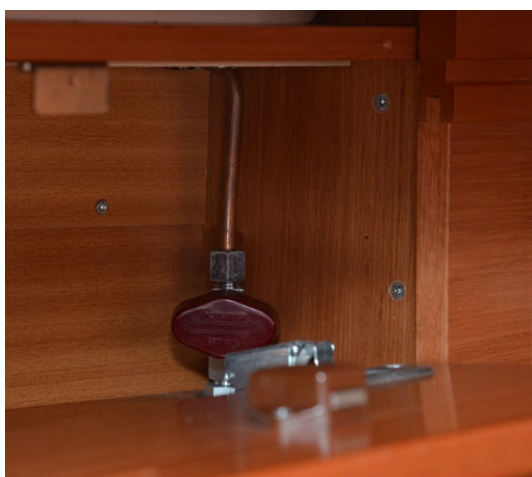
2 VALVES



2.1 Emergency fuel cutoff valve

It is located in the right aft cabin under the bed.

It is to be used only in case of an emergency (fire)



2.2 Gas valve in the galley

It is located in one of the cupboards in the galley. The valve is open when the lever is in the vertical position and closed when it is in horizontal position.

Please close it when not in use.



2.3 Gas valve in the cockpit

Turn to open or close.

When the stove is not in use, please close the valve.

When changing the bottle, lay it on the side, hold the valve and slowly turn the bottle until it is tight.

3 SANITATION



3.1 Toilet

By pulling and pushing the lever you can pump the seawater in and out of the toilet bowl.

If the small lever on the back of the pump is in the left position, the water goes in and out at the same time. If it's in the right position, the water only goes out.

After the use leave the small lever in that position in order to avoid the water return.

Make sure both seacocks are open when using the toilet. After the use please close both of them.

CAUTION!!!

DO NOT throw paper tissues, napkins or other garbage in the toilet bowl because it may clog the drain pipes.

To avoid uncomfortable situation and extra expenses, please dispose the toilet paper and other garbage into a plastic bag.



3.2 Seacocks

There are 2 seacocks in the galley under the sink and four seacocks in each toilet under the washbasin.

Please close them when not in use. If the toilet seacocks are closed, the pump will not work.



3.3 Water supply switching lever

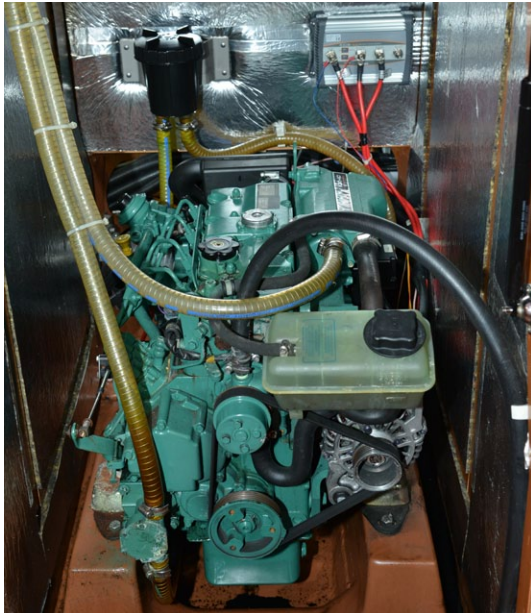
It is located under the washbasin in the rear bathroom.

CAUTION!!!

When one water tank empties, immediately close all the running taps in order to avoid the water pump to take air into the system. Turn the lever to switch the water supply to the other tank and open the tap.

The water should start flowing after couple of seconds.

4 ENGINE AND ENGINE CONTROL PANEL



4.1 Engine compartment

All engines are regularly maintained by our mechanics. Nevertheless, to be sure it is working properly, check the oil and water levels regularly, as well as inspecting the engine visually.

The procedure of controlling the engine will be elaborated by our skippers during the check-in.

The boat is equipped with a spare impeller and a spare belt. Should any of these parts need to be changed, please leave that to our service team.

4.2 Engine control panel: engine start / stop, gear lever, fuel level indicator, hour meter

Starting the engine:

1. Before starting the engine, push the button on the gear lever and the gear lever a bit forward in order to increase RPMs without engaging the propeller.
2. Switch on the electric contact (button on the upper left side of the start panel)
3. Hold the start switch with light pressure (upper right on the start panel) for about 10 seconds (preheat)
4. Push the start button fully to start the engine

Stopping the engine:

1. Push the stop button (lower right on the start panel)
2. Switch off the electric contact

Please return the gear lever to the neutral position before shutting down the engine.

Cruising speed is at about 2300 RPM. Faster than that puts great tension on the engine and the clutch and could result in damage.



4.3 Bow thruster

To engage the bow thruster, push both ON buttons at the same time.

Choose the direction by pushing one of the arrows.

DO NOT use it for more than 10 seconds without stop.



5 NAVIGATION INSTRUMENTS



5.1 Exterior instruments

During the check-in, our skippers will explain the basic functions of all instruments. For more in-depth information You can consult the user manual which is located in one of the cupboards by the navigation table.

5.2 Chartplotter

It is located on the cockpit table, and the user manual is in the same folder with other manuals.

6 ANCHOR



6.1 Anchor and chain compartment

6.2 Electric windlass

It is recommended to release the anchor manually, because sometimes during the anchoring maneuver the winch might be too slow considering the speed of the moving boat.

During the maneuver please attach the compartment hatch to the fence using the provided rope with a hook.

Please make sure the anchor doesn't hit the bow during anchoring procedure.

When the anchor is not in use, attach it to the bollard as a safety measure.

CAUTION!!!

Just before you start lifting the anchor, engage the forward gear for 2-3 seconds (with minimum gas, just to get a slight push forward in the direction of the anchor). That way you will prevent the windlass to pull the whole boat, which can seriously damage it.

To avoid injury, wear gloves and shoes while operating the windlass.

The chain is marked every 10m with a red mark.

7 DECK AND DINGHY



7.1 Cockpit shower

The boat is equipped with a cockpit shower.

Please pull out the hose with care to avoid damage.

After the use check whether the tap is closed.



7.2 Dinghy

7.3 Outboard engine

To avoid damage of the impeller, please always start the outboard engine in water.

When the dinghy is not in use, please return it to its position on the deck; if you tow it behind the boat, there is a chance of losing it along the way, and that case is not covered by any insurance.

Also **DO NOT** tow the dinghy while the outboard engine is still mounted on it.

After each use please return the outboard engine to its place onboard.

8 BILGE

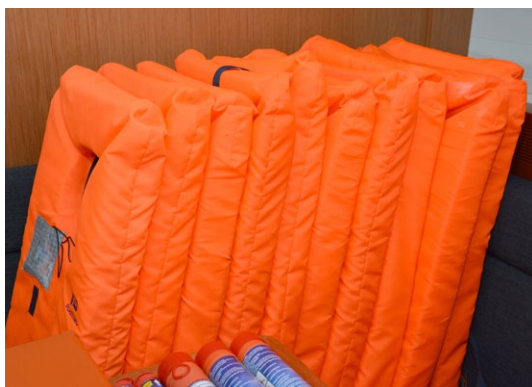


8.1 Bilge pump

Automatic bilge pump is located under the floorings, near the navigation table.

If there is water in the bilge, the floating switch starts the pump.

9 SAFETY EQUIPMENT



9.1 Lifejackets

All lifejackets will be in the sallon during the check-in ready for your inspection, so please during the check-out leave them in the same place so we can check them.

10 TIPS

In case of any damage that can be repaired on spot by yourself or with a help from a third person, please immediately contact our base in order to arrange eventual expense coverage if needed.

When returning to our base, please enter between the piers in reverse gear because the space between them is rather narrow.

